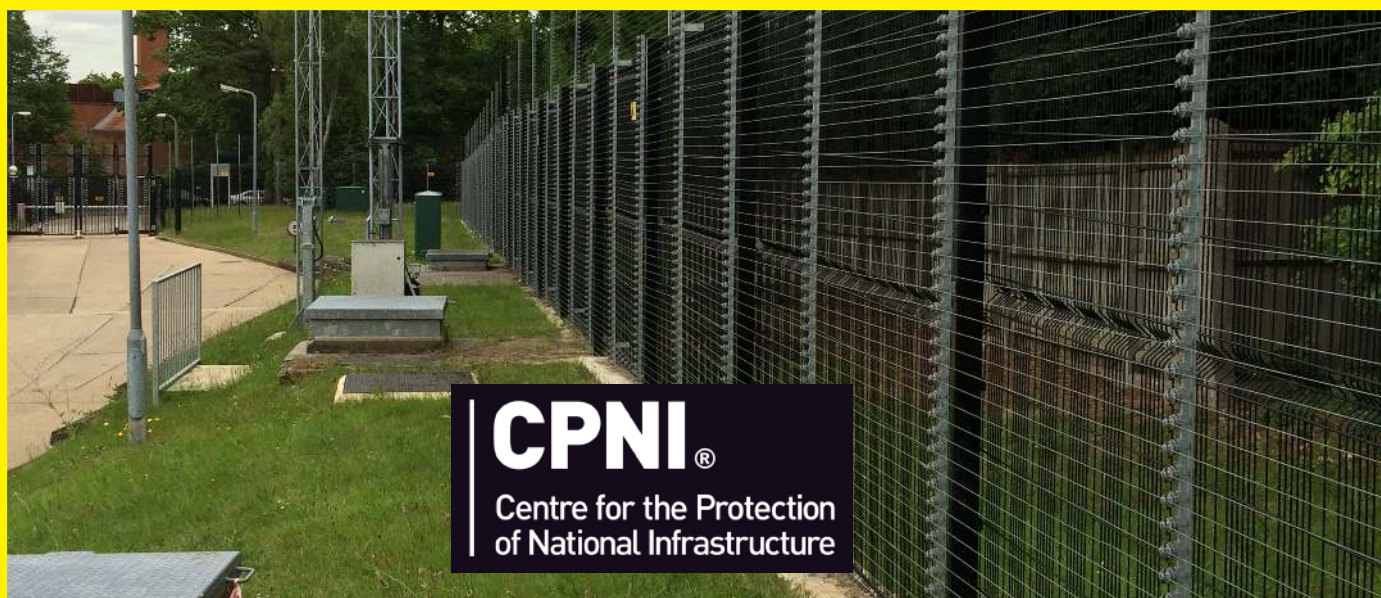


PulseSecure P r o t e c t o r



Harper Chalice
Integrated Perimeter Security Specialists

PulseSecure Protector



PulseSecure Protector is a “pulsed” electrified perimeter intrusion deterrent and detection system. Unlike other perimeter security systems, PulseSecure security systems actively protect perimeter boundaries and property against unauthorised access. PulseSecure perimeter security systems are safe and legal for the protection of people and property and have been adopted by many national and international companies as their chosen first line of defence for the protection of their assets and property.

PulseSecure Protector electric security fencing is the most advanced electrified perimeter security system that fully monitors the protected boundary. Due to the “double pole” High and Low voltage electrified perimeter security system, the detection barrier is therefore fully monitored with the high voltage deterrent pulses switched on or off - if the wire is cut, shorted or tampered with then the system will still generate an alarm state, in the same way as when the HV pulses are present. PulseSecure Protector systems are fully compliant with BS1722 part 17, BSEN 60335 and IEC 60335 international standards.

A Physical Barrier

PulseSecure pulsed electrified perimeter security systems – power fences – provide total security and protection of any perimeter or boundary. The construction of the PulseSecure system also creates a psychological and physical barrier to prevent would-be intruders from achieving their objective. By design PulseSecure systems actively Defend... Deter... Deny... and Detect... attempts to gain unauthorised access!

Potential intruders, repelled by a SHORT, SHARP, REGULATED SAFE but PAINFUL electric shock when they come into contact with the PulseSecure system. Any attempt to cut, load, short-circuit or tamper with the PulseSecure system generate alarms

True Low Voltage

Protector systems are fully monitored “Double pole” High and True Low Voltage electrified perimeter security systems. The detection barrier is fully monitored with the high voltage deterrent pulses switched on or off.

Integration & Design

PulseSecure Protector perimeter systems can be installed as standalone systems controlled and monitored on their own RS485 SecureBus network and easily interfaced with any third party security alarm monitoring system for complete software control and integration. The systems are zoned in accordance with the site operational requirements or CCTV zone specification requirements for remote monitoring and alarm verification.

PulseSecure Protector

PulseSecure features:

- CPNI Approved for Government Use
- Highest rated Electrified Perimeter Security System
- True Low Voltage System
- Independent zone activation and monitoring
- Live system feedback & information
- Made in Britain

PulseSecure



Setting the standard

We are the UK's leading manufacturers and suppliers of PIDS systems and Electrified Perimeter Intrusion Detection systems. Our range of perimeter security systems is continually evaluated by leading authorities and test houses and in independent appraisals by government departments. Approved for UK Government use, for details contact CPNI.

Quality Assured - Accredited Dealer Network

To ensure that our PulseSecure Systems are installed and maintained to the correct standards and specifications, every PulseSecure system will be supplied and installed by our Network of Approved Accredited Dealers.

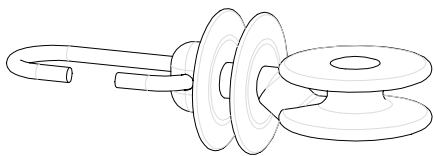
Commissioning and Certification

Following completion of PulseSecure installations a predefined commissioning process will be undertaken to record the performance of the system. All systems will be inspected by Harper Chalice as the manufacturer and a "certificate of compliance" issued. This provides assurance that all systems are installed to the correct specification and standards.

PulseSecure Protector

600mm (min)

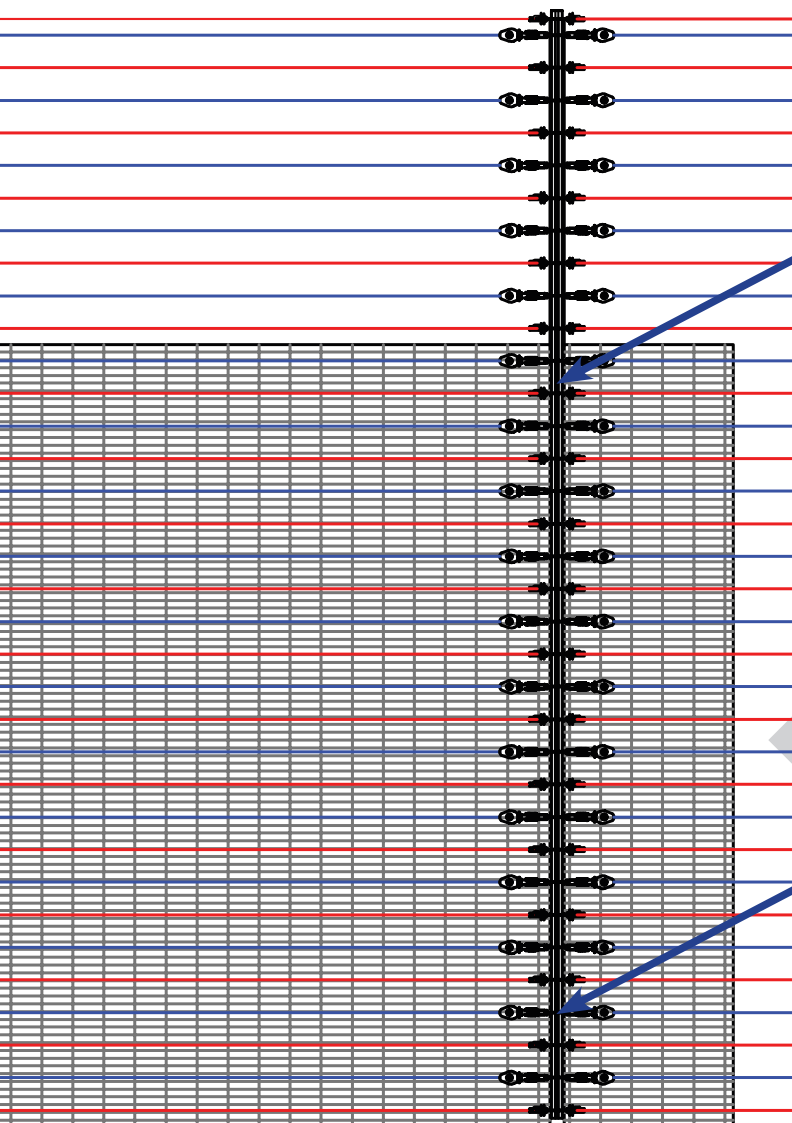
fence height 1.8m (min)



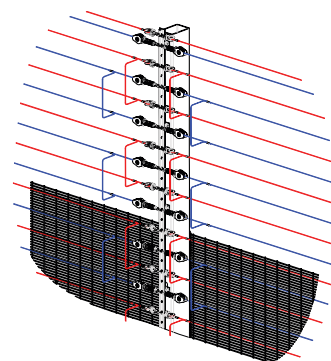
Dual Isolation Barrier

Dual Isolation barrier are included in the design of all of our plastic components. This is a design feature to improve the insulation of the system and reduce the impact contamination to the system.

PulseSecure Protector

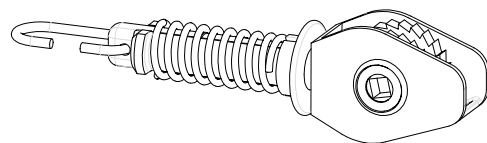


← Zone A Zone B →



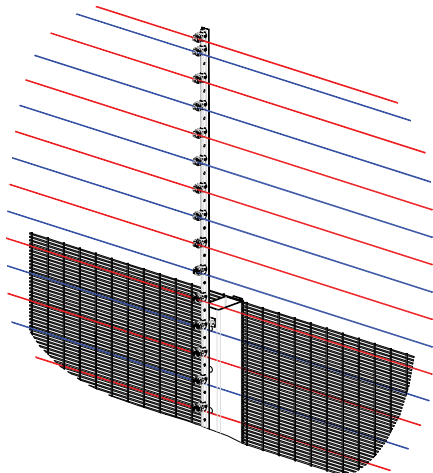
Dual Loop System – True Low Voltage

The System features a low voltage detection loop as well as the high voltage loop. This means that the system continues to be monitored even when the high voltage pulses are turned off.



Reduced Tension System

The design of the PulseSecure Protector system uses tension spring assemblies on each wire to prevent over tensioning of the system and reduce the tension required on each wire. This not only reduces the strain on the system components but also reduced the requirements of the host fence system.



Easy Insulation

Complete range of fixings and accessories for simple and easy installation of the system onto almost any security fence or wall.

Harper Chalice Group

(t): +44 (0)24 7642 1300 | sales@harperchalice.com | www.harperchalice.com

PulseSecure Protector

Proven Design

PulseSecure systems have been installed for over 15 years across the globe. The PulseSecure systems have been developed over this period ensuring maximum system performance. With our own in house design teams responsible for designing both the hardware and software of our systems, continued development and improvement are key to our success.

The PulseSecure Protector System has been tested and approved by CPNI. It has been successfully deployed across many CNI and High security sites across the UK and abroad.



Environment Agency Site

Following a security review, a clients site was identified as a CNI site and required a complete security upgrade. The perimeter was identified as a key risk area and the highest security standards required.

Following review by the client and security consultant, the PulseSecure Protector system was selected.

The site posed many difficult challenges from access and environment but due to the Protector systems flexible design we were able to provide a fully compliant solution for both the perimeter and gates.

The site consisted of two separate facilities that needed to be combined and integrated into a single security solution and integrate with the CCTV and SMS solutions.

PulseSecure Protector

Other Case Studies & Applications

Water Treatment Works



MOD



Power Generation Sites



Nuclear Facilities



Data Centres



Pharmaceuticals



Ports & Terminals



Car Storage Compounds



Telecoms



Harper Chalice Group

(t): +44 (0)24 7642 1300 | sales@harperchalice.com | www.harperchalice.com



Harper Chalice

8 Binns Close
Coventry
CV4 9TB
United Kingdom

(t): +44 (0)24 7642 1300
(f): +44 (0)24 7642 1309
sales@harperchalice.com

20180112

