

ACTIVE INFRARED

THE ESSENTIALS



MAXIRIS

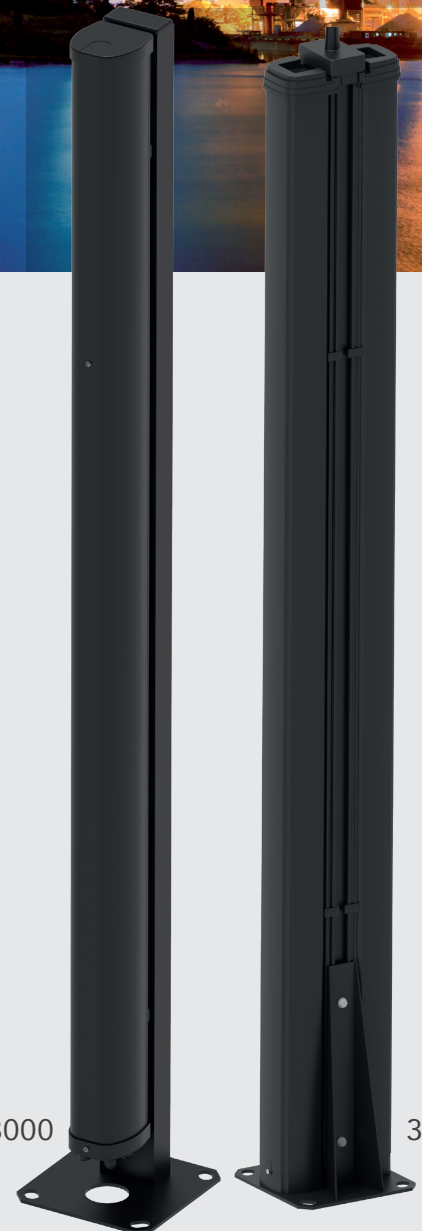
VERY HIGH-PERFORMANCE
ACTIVE INFRARED BARRIER



PERFORMANCE FEATURES

- **High reliability** of infrared
- **High density** of cells
- **Remote configuration and maintenance diagnostics**
- **ZONING** function
- **Adaptability:** 4 housings available
- **MAXIBUS Universal compatible:** integration with VMS

3000



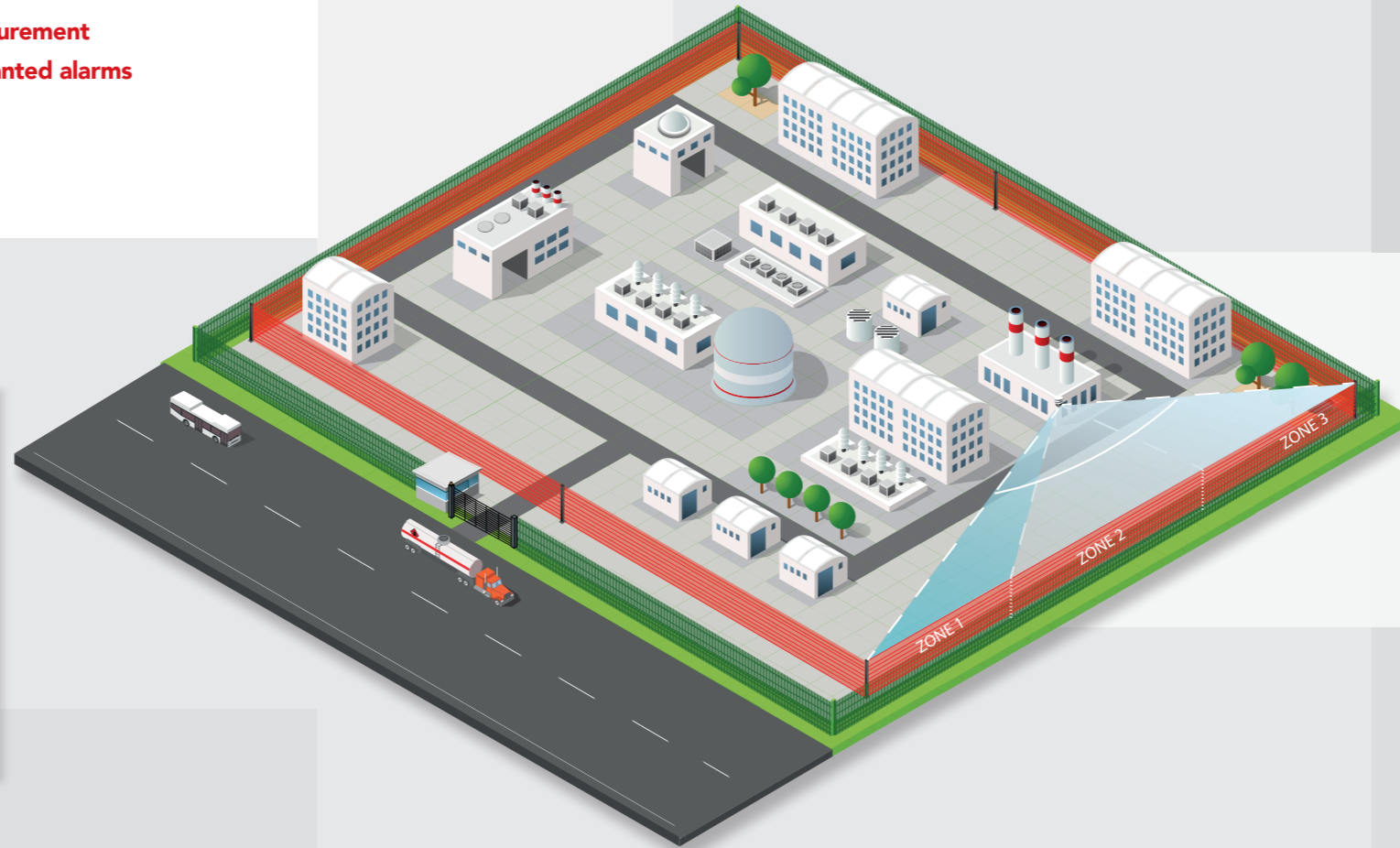
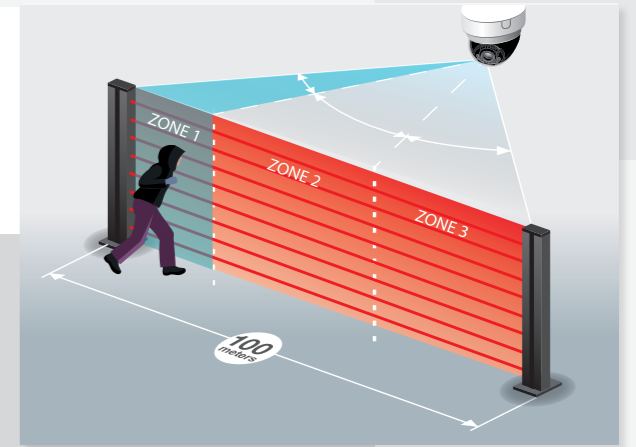
3100

HIGHLY RELIABLE INFRARED

- Based on a French company with **35 years' experience** in infrared technology
- **Intruder size filtering using several simultaneous detection modes:**
 - standard modes: mono-detection, bottom beam mono-detection and dual-detection
 - **triple-detection:** alarm on interruption of 3 cells limiting false alarms (in particular animals)
- **Intruder speed filtering: individual beam cut time measurement**
- Combination of the two filters: **reduced number of unwanted alarms**
- **Multiple heights** and high cell density:
 - Up to 8 cells for 2 m high columns
 - Up to 10 cells for 3 m high columns
 - Up to 18 cells for 5 m high columns

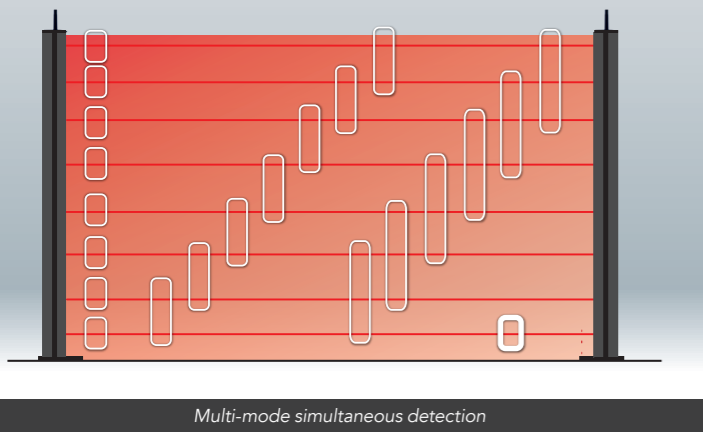
ZONING FUNCTION

- Optimisation of the video system and **alarm verification**
- Up to **3 detection zones** per barrier
- **Configurable zone** lengths



ADAPTABILITY

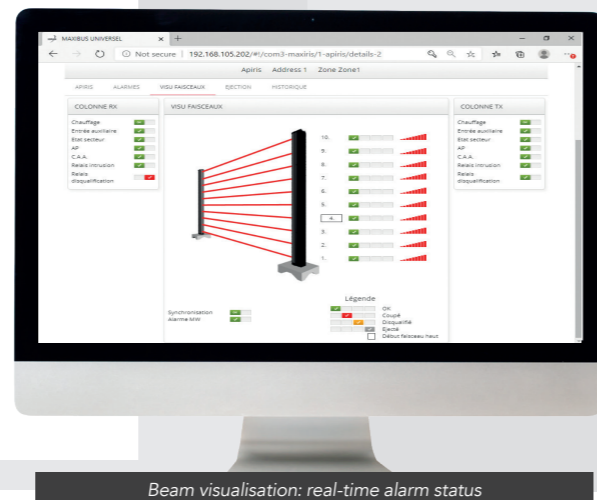
- Can be adapted to **all site configurations:** **4 envelopes** available
- **Multiple heights:** up to 5 meters



Multi-mode simultaneous detection

REMOTE CONFIGURATION AND MAINTENANCE

- **Embedded web server**
- **Beam visualisation:** real-time alarm status
- **Number of cells** configuration
- Ability to **eject beams**
- Configuration of **each detection mode** and **its response time:**
 - mono-detection
 - independent bottom beam management (crawling)
 - dual-detection
 - **triple-detection**
- Possibility to run **several detection modes simultaneously**



Beam visualisation: real-time alarm status

MAXIBUS UNIVERSAL COMPATIBLE

OPTIMISED ALARM MANAGEMENT...

- **Centralisation of all system alarms** to a single point
- **Remote access to products:** configuration and maintenance
- **Embedded** web server
- **Time and date stamped history** of alarm events

...DESIGNED FOR SIMPLIFIED INTEGRATION ON ALL YOUR SITES

- **Integration with VMS**
- **Easy integration:** API available
- **Secure** data transmission: **802.1X**, HTTPS...
- **Various** alarm transmission **protocols:** ModBus, API
- **Dry contact** outputs: up to 136 relays

TECHNICAL CHARACTERISTICS

	MAXIRIS COLUMNS			
Housings	3000	3100	3200	3400
Column heights	1,10 m / 1,90 m / 2,50 m / 3m / 5 m	1 m / 2 m / 2,50 m / 3 m	1,10 m / 1,90 m / 2,50 m / 3 m / 5m	2,50 m / 3 m / 5 m
Maximum outdoor IR range in all weather conditions	100 m		80 m	
Maximum number of cells per direction	Up to 18 cells	Up to 10 cells	Up to 18 cells	Up to 18 cells
Detection modes	Mono-detection / Bottom beam mono-detection / Dual-detection / Tri-detection			
Power supply	110 Vac/230 Vac-60Hz/50Hz			
Alarm information	Intrusion (up to 3 different alarm informations when zoning activated: 1 per zone) / Disqualification / Tamper / Anti-climbing cap / Technical alarm			
Alarm transmission	Wired network output / dry contact			
Alignment tools	Audio and visual signals on all columns			
Operating temperature	-40 °C to +70 °C			
Electromagnetic compatibility	Compliant with European standards (CE label)			

	MAXIBUS UNIVERSAL HUB
Configuration tools	Embedded web server
Alarm outputs	8 to 136 dry contact outputs / Modbus / API
4 communication ports	32 columns per communication port
Power supply	12 Vdc
Operating temperature	0 °C to +55 °C
Security	Compatible networks 802.1x and TLS